

PROPOSED TOWER CENTER

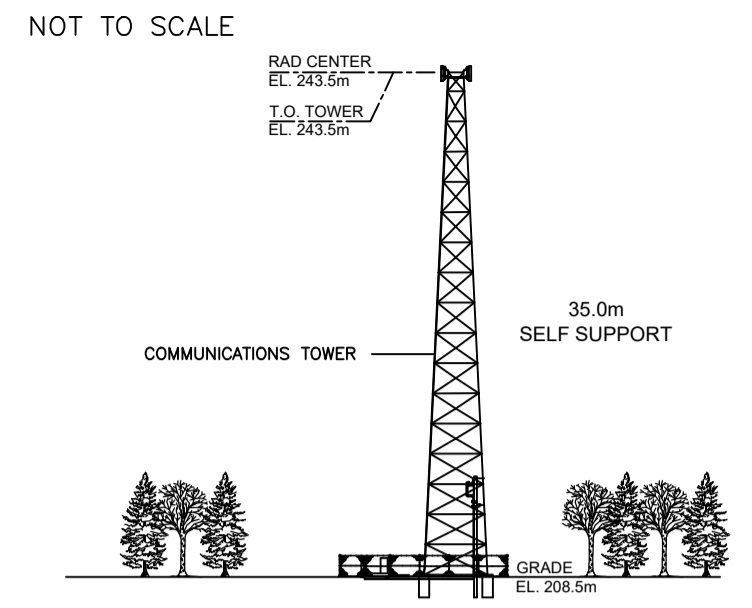
ELEVATION
TOWER BASE = 208.5m

MTM ZONE 1
EAST 315074.584
NORTH 5262348.861

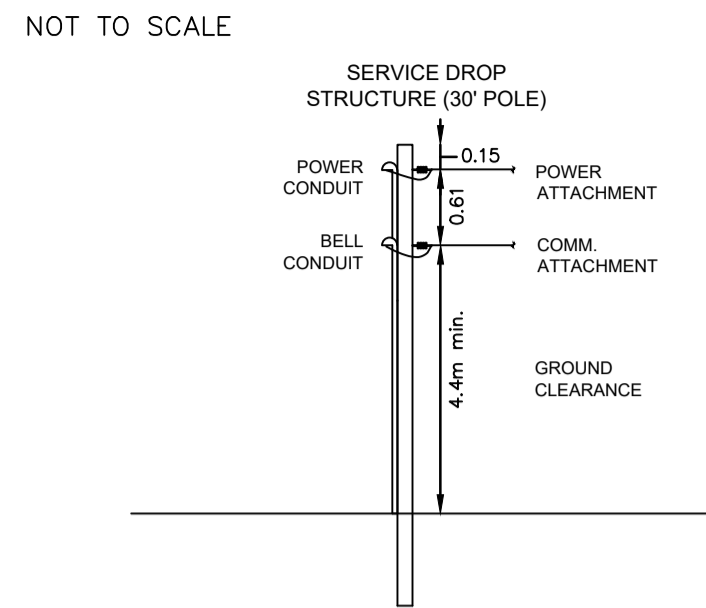
NAD83 (WGS84)
LATITUDE N47°-30'-01.01"
LONGITUDE W52°-51'-49.02"



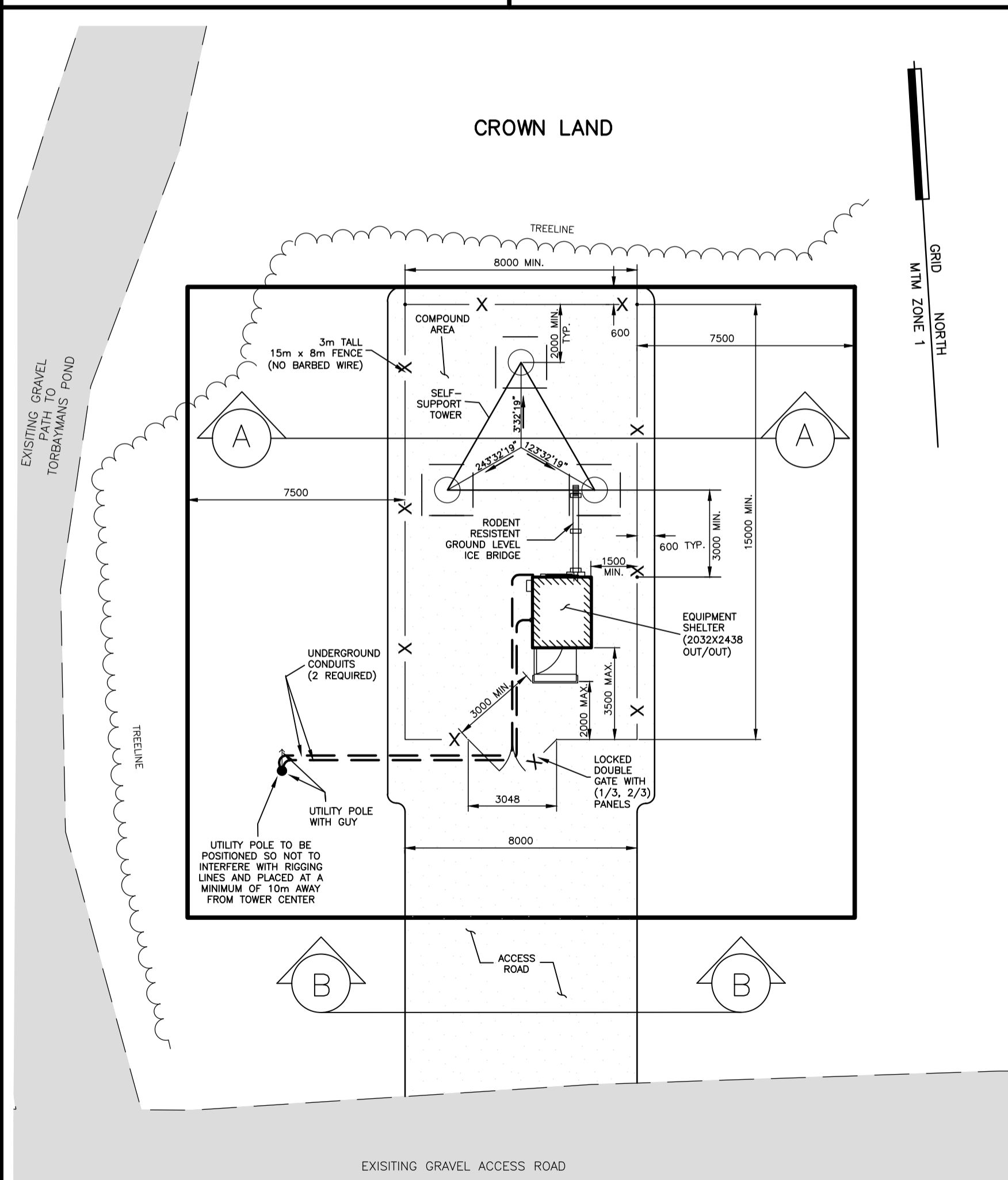
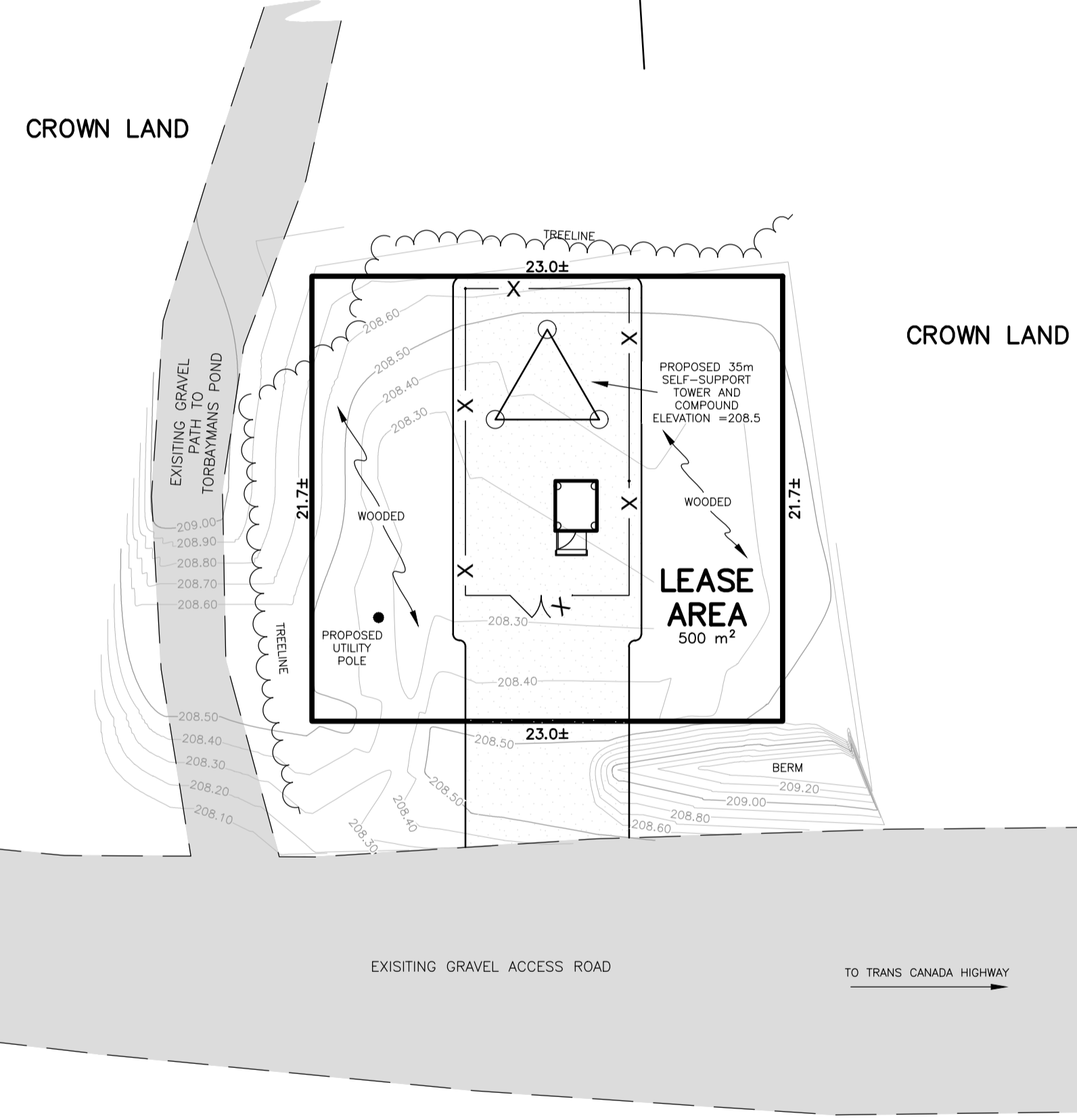
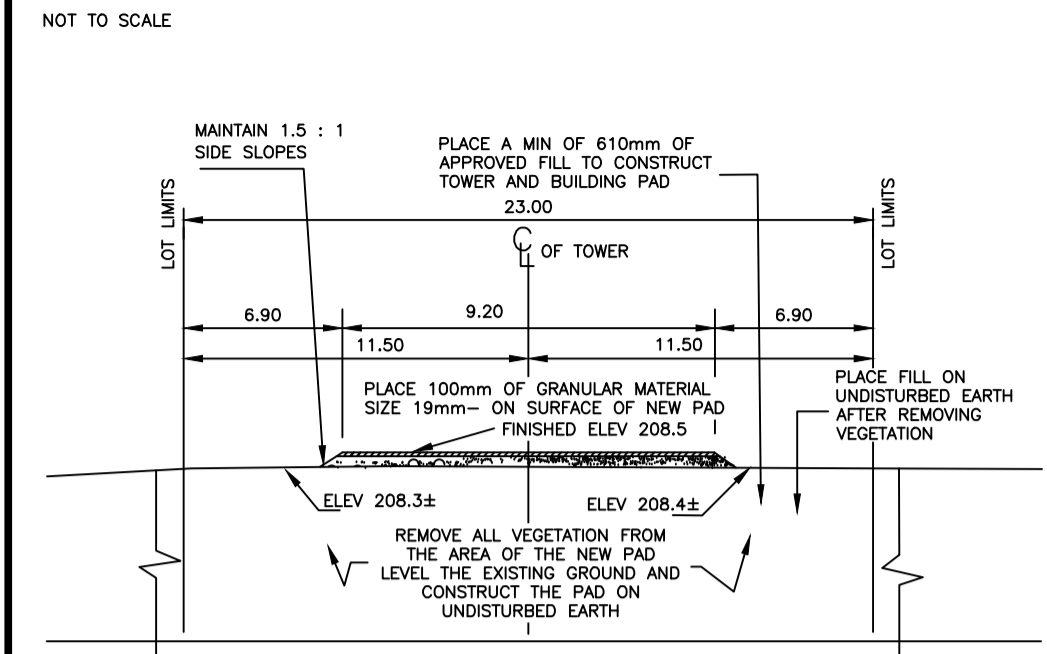
TOWER ELEVATION



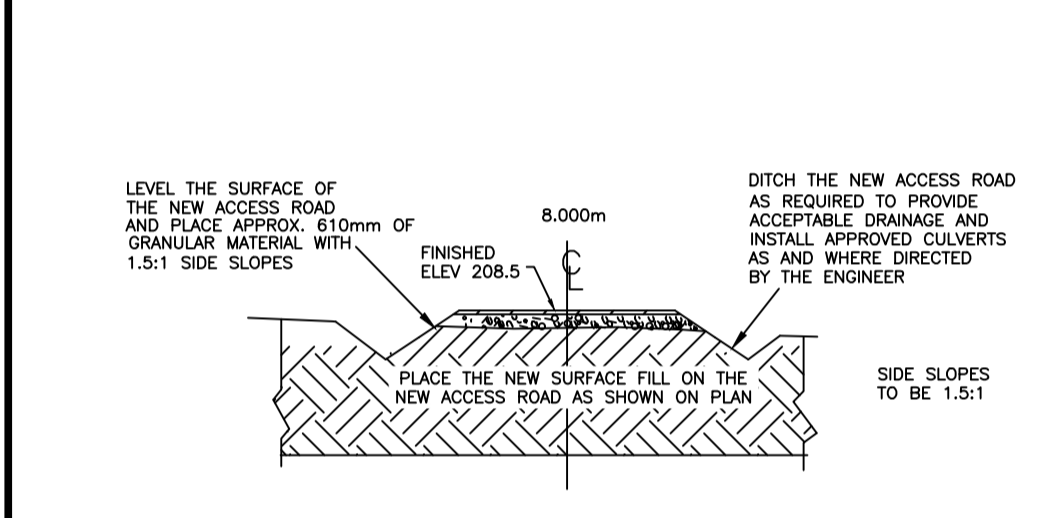
POLE ELEVATION



TYPICAL SECTION THRU TOWER PAD AT "A-A"



TYPICAL SECTION THRU "B-B"

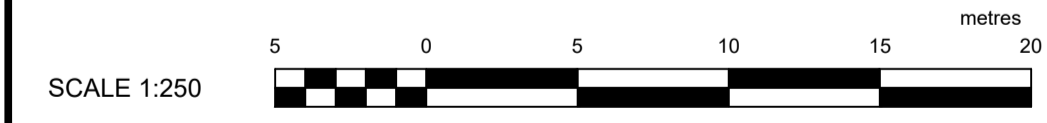


LEGEND

DESCRIPTION	SYMBOL	DESCRIPTION	SYMBOL
UTILITY POLE / GUY	●—	FENCE	— — — — —
LIGHT STANDARD	⊙	OVERHEAD LINE(S)	— — OH — —
SQUARE METRE(S)	m²	CENTRELINE	— — — — —
NEW BRUNSWICK LAND SURVEYOR	NBLS	TOP OF SLOPE	———
LANDS DEALT WITH BY THIS PLAN	OR	BOTTOM OF SLOPE	———
		TREELINE	~~~~~

SITE DEVELOPMENT PLAN SHOWING: PROPOSED TOWER SITE

SITUATED SOUTH OF TORBAYMANS POND, CITY OF ST. JOHN'S, PROVINCE OF NEWFOUNDLAND AND LABRADOR



Bell

SITE: TORBAYMANS POND (J1167)

wsp

1070 ST. GEORGE BOULEVARD, SUITE 160
MONCTON, NEW BRUNSWICK
CANADA, E1E 4K7
PHONE: 506 857-1675
WWW.WSP.COM

DRAWN: ATT	FIELD: HAWCO KING RENOUF	DATE: AUGUST 10, 2022
JOB: 221-08453	CAD: 221-08453-720	CHECKED: BMM

SCALE 1:250

SCALE 1:150