

# INSURANCE PLAN OF THE CITY OF ST. JOHN'S NEWFOUNDLAND.

PREPARED BY  
**CHAS. E. GOAD,**  
CIVIL ENGINEER

SCALE OF BLOCK PLANS  
50 FEET = ONE INCH.

REVISED TO  
MARCH, 1884  
BY  
CHAS. E. GOAD

162, ST. JAMES ST.  
MONTREAL.  
NOVEMBER 1880



(INDEX & KEY  
SEE SHEET 2)

POPULATION ABOUT 28,000  
Gravitation Water Supply from Windsor Lakes  
4 1/2 miles from City - Water Level 508 ft. above  
Low Water in Harbour  
Pressure on Hydrants:- Water St. (Cor. Holloway) 163 lbs.  
Duckworth (Cor. Military Road) 149 lbs.  
Cover (Cor. Cathedral Hill) 136 lbs.  
Military Road (Cor. Prescott) 107 lbs.

Two Hand Engines.  
For Details of Protection see printed Report

Water Supply has been increased Ten per Cent.

ST. JOHN'S, Newfoundland.  
REVISED TO MARCH, 1884,  
AND HEREIN SO AND SO ADDED.



-KEY PLAN-  
SCALE 500 FT = 1 INCH

D.D. - Detached Dwellings, S.D. - Scattered Dws.  
THREE FIRE HALLS SHOWN THUS ■  
HYDRANTS ON KEY PLAN SHOWN THUS: ●

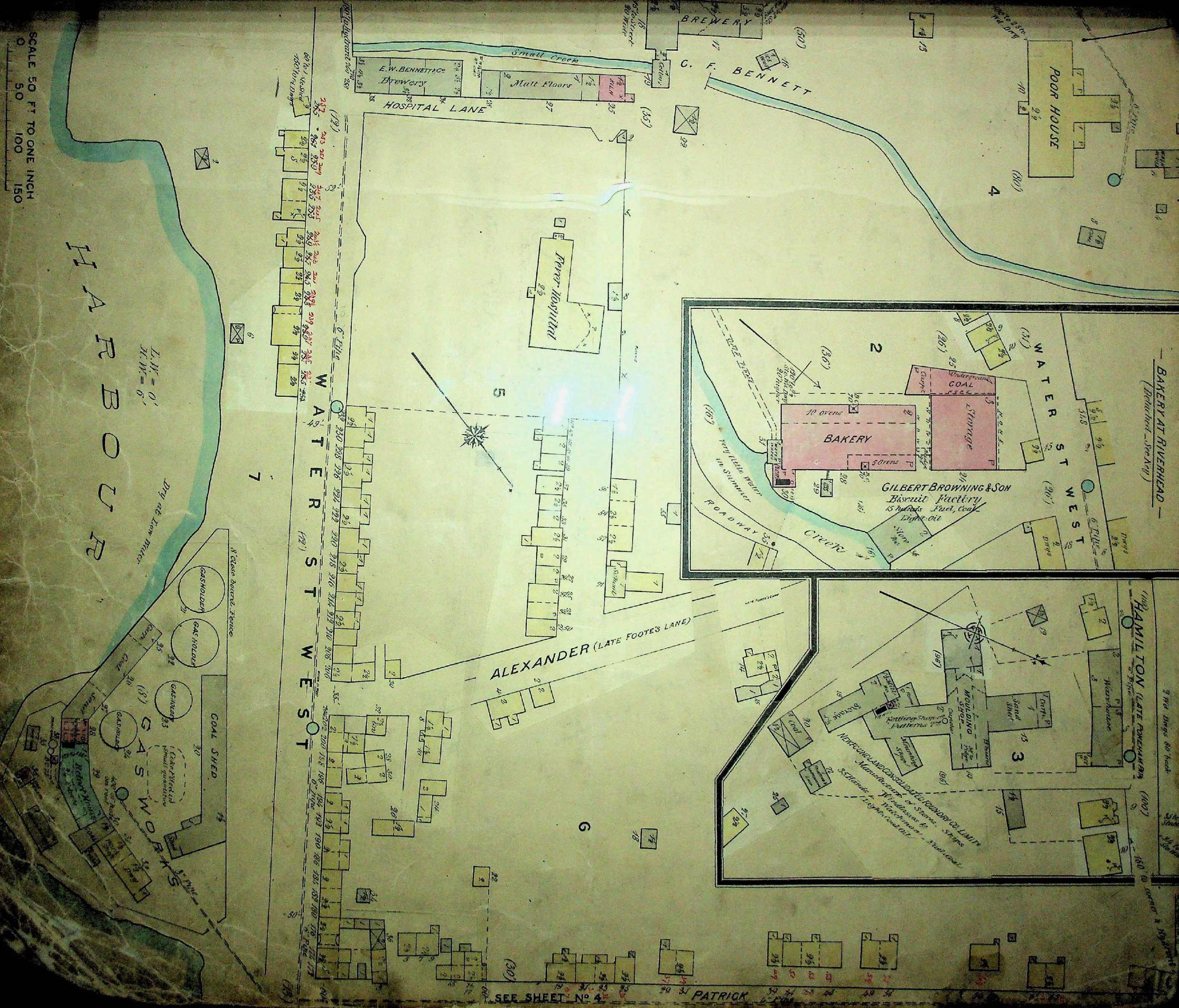


SCALE 50 FT TO ONE INCH  
0 50 100 150

HARRISBOUR

L.W. = 0'  
H.W. = 6'

Dry at Low Water



WATER STREET WEST

ALEXANDER (LATE FOOT'S LANE)

HAMILTON (LATE POMEROY'S LANE)

SEE SHEET No 4

PATRICK

PATRICK

MARINE 13

HARBOR

WATER PARADE WEST

JOB'S BRIDGE

(NEW) ST PATRICK'S CHURCH (Building)

SCHOOL

St. Patrick's Convent

CONVENT LANE

HAMILTON ST.

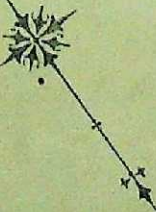
CHAMP O' KEHAM

ROCKY LANE

PAITH

JOB'S LANE

ST JOHN'S NAIL MANUFACTG Co  
No Appliances



SCALE 50 FT TO ONE INCH  
0 50 100 150

Low Water 0'  
High Water 6'

JOBS BRIDGE

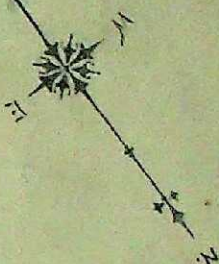
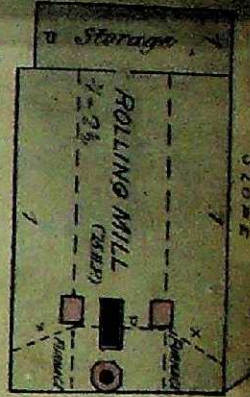
SEE SHEET N° 4

SCALE 50 FT TO ONE INCH  
0 50 100 150

HARBOR

H.W. = 6'  
L.W. = 0'

Bridge to Fish Sheds 400 yards



SEE SHEET N° 6

X

Old Wharf

Johnson & West's

ENGINE & BOILER WORKS

BOILER SHOP (5 FISTS)

Stewart

COAL

SPRINGDALE

THIL

FLOWER

GEORGE

HUTCHINGS

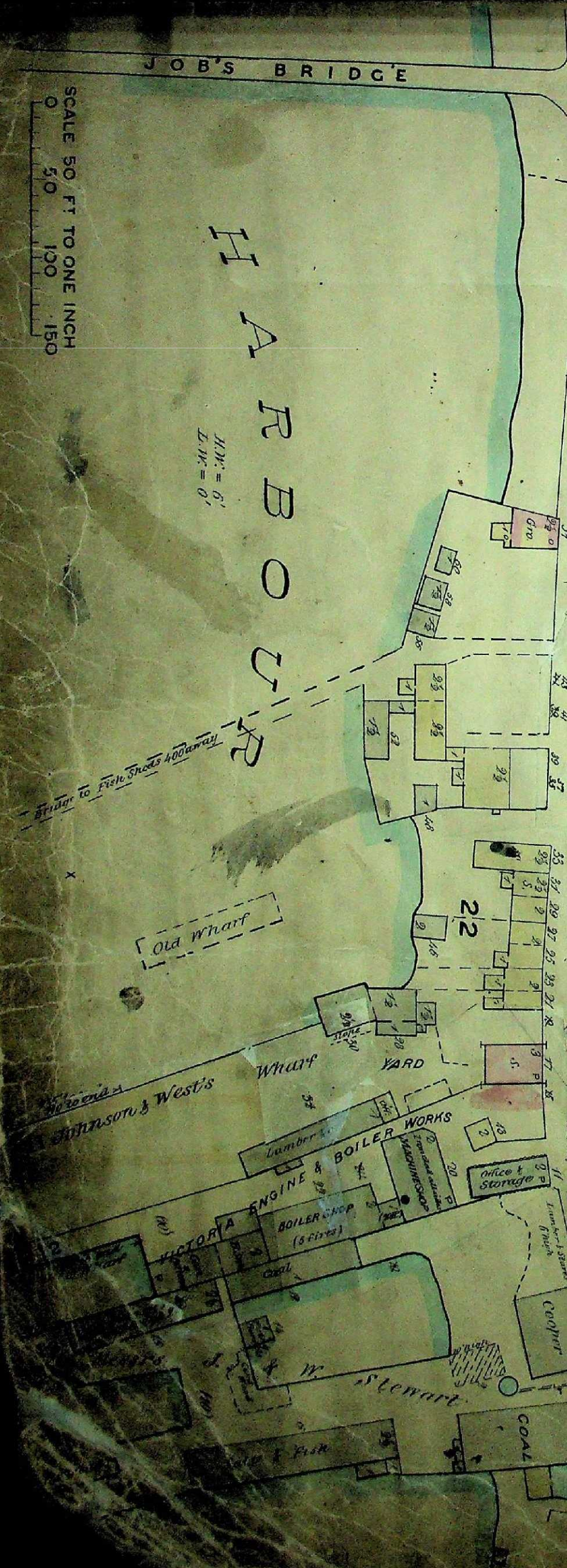
LAZY LANE

BAN ROAD

ROAD

ROAD

ROAD



FIRE LIMIT

FIRE LIMIT

FIRE LIMIT

FIRE LIMIT

FIRE LIMIT

FIRE LIMIT

14

19

21

22

20

18

17

24

15

16



FLOWER HILL

HUTCHINGS LANE

STREET

THOMAS

29

25B

HUTCHINGS LANE

BUCHANAN

30

26

27A

WAREHOUSE

WAREHOUSE

38

31

27B

PUBLIC COVE

WATER

36

NEW

DRELAN'S WELL ROAD

P. ROGERSON AND SON

EDWIN DUDER

C.F. BENNETT

WALDEGRAVE

OWER

27B

25

RENNIE'S COVE

32

STEPHEN

28

27

G. BROWNING & SON

QUEEN

BARTER'S HILL

29

STEWART'S COVE

SEE SHEET No 7



STEWART'S COVE

QUEEN

BARTER'S HILL

MESSRS J & W. STEWART

ST PETER'S CHAPEL (R.C.)

WAREHOUSE

POST OFFICE

LION SQUARE

EDWIN DUDER

HOLDSWORTH

NOTRE DAME

WAREHOUSE

ADELAIDE

WAREHOUSES MONROE

WARREN'S COVE

WATER

GEORGE

COWE

39 BOYD & Mc DOUGALL

TEMPLETON

WILLIAMS LANE

ALAN GOODRIDGE & SONS

WAREHOUSE

MAHONS LANE

P & L TESSIER

WAREHOUSE

DUCKWORTH

STORAGE

BECK'S COVE

SCALE 50 FT TO ONE INCH

0 50 100 150

HARBOR



SEE

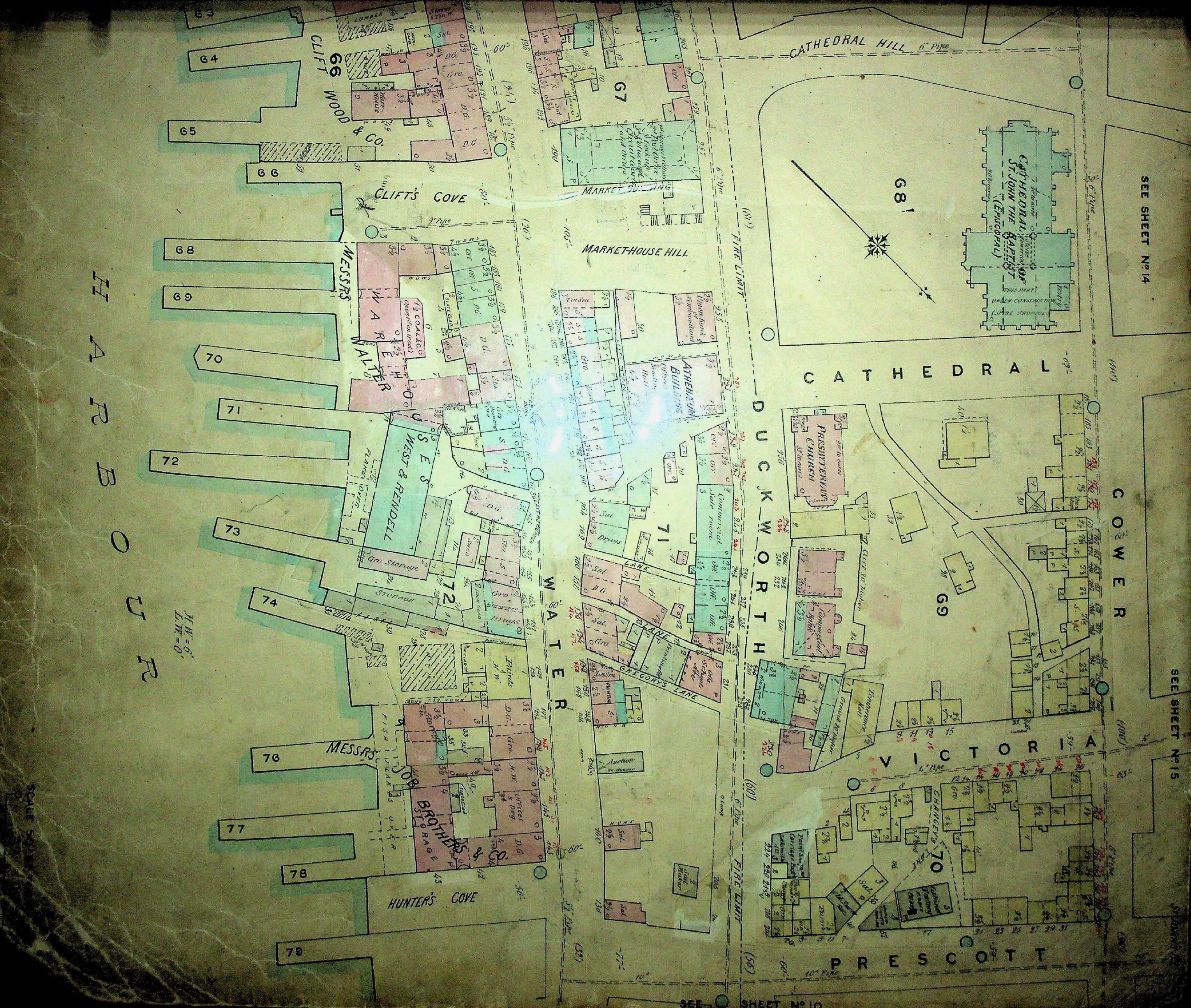
SHEET QUEENS No 14

ROAD

ST JOHN'S HILL

H.M.S.O.  
L.W.O.

SCALE 50'



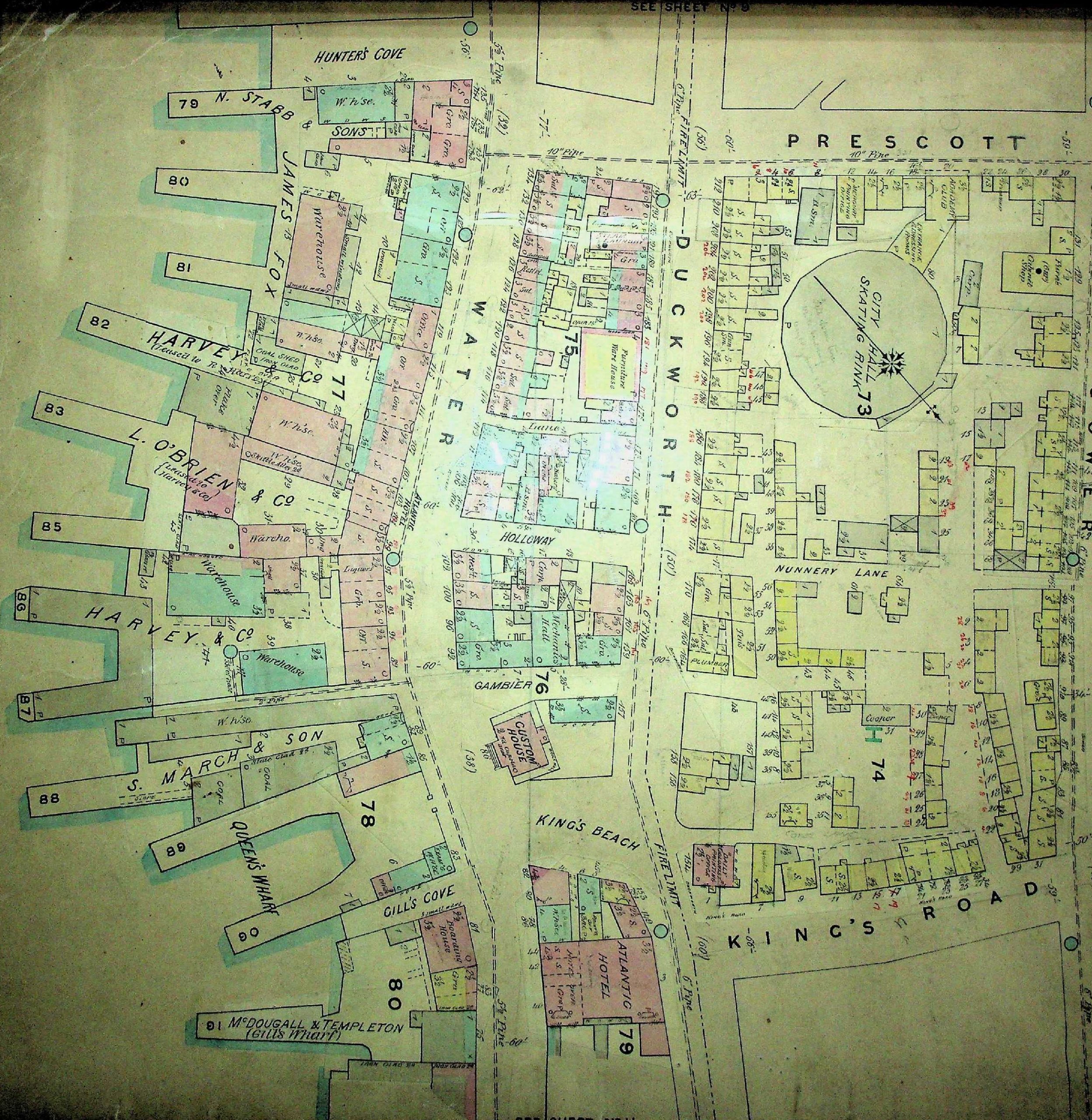
SEE SHEET N° 14

SEE SHEET N° 15

HARRISON

H.W. = 6'  
L.W. = 0'

SEE SHEET N° 10



H  
A  
R  
V  
E  
Y  
&  
C  
O  
L  
D  
W  
E  
L  
L  
S

H.M. 6  
I.W. 0

SCALE 50

HUNTER'S COVE

P R E S C O T T

CITY HALL  
SKATING RINK 73

C O W E R

BRITISH SQUARE

79 N. STABB

80

81

82 HARVEY & CO  
(closed to R. Harvey)

83

L. O'BRIEN & CO  
(closed to R. Harvey)

85

HARVEY & CO

86

88

S. MARCH & SON

QUEEN'S WHARF

89

80

M<sup>c</sup>DOUGALL & TEMPLETON  
(Gills Wharf)

GILL'S COVE

KING'S BEACH

ATLANTIC HOTEL 79

GAMBIER 76  
CUSTOM HOUSE

NUNNERY LANE

74

KING'S ROAD

W A T E R

D U C K W O R T H

76

GAMBIER

78

SON

80

ATLANTIC HOTEL

SEE SHEET No 10

KING'S ROAD

ATLANTIC HOTEL

92 W. & G. RENDELL

LUMBER

93

Warehouse

AMERSON SHED

80

Warehouse

95

Warehouse

Scattered

98 H. J. STABB

COAL LUMBER

99 JAS. MURRAY

82

Warehouse

101

PHILIP HUTCHINS

81

Warehouse

102

HILL OF CHIPS

SEE SHEET No 12

(30)

(31)

(32)

(31)

(15)

(20)

(20)

(20)

(20)

(20)

(20)

(20)

(20)

(20)

(20)

(20)

(20)

(20)

(20)

(20)

(20)

(20)

(20)

(20)

(20)

(20)

(20)

(20)

(20)

(20)

(20)

(20)

(20)

(20)

(20)

(20)

(20)

(20)

(20)

(20)

(20)

(20)

(20)

(20)

(20)

(20)

(20)

(20)

(20)

(20)

(20)

(20)

(20)

(20)

(20)

(20)

(20)

(20)

(20)

(20)

(20)

(20)

(20)

(20)

(20)

(20)

(20)

(20)

(20)

(20)

(20)

(20)

(20)

(20)

(20)

(20)

(20)

(20)

(20)

(20)

(20)

(20)

(20)

(20)

(20)

(20)

(20)

(20)

(20)

(20)

(20)

(20)

(20)

(20)

(20)

(20)

(20)

(20)

(20)

(20)

(20)

(20)

(20)

(20)

(20)

(20)

(20)

(20)

(20)

(20)

(20)

(20)

(20)

(20)

(20)

(20)

(20)

(20)

(20)

(20)

(20)

(20)

(20)

(20)

(20)

(20)

(20)

(20)

(20)

(20)

(20)

(20)

(20)

(20)

(20)

(20)

(20)

(20)

(20)

(20)

(20)

(20)

(20)

(20)

(20)

(20)

(20)

(20)

(20)

(20)

(20)

(20)

(20)

(20)

(20)

(20)

(20)

(20)

(20)

(20)

(20)

(20)

(20)

(20)

(20)

(20)

(20)

(20)

(20)

(20)

PILOT'S HILL

83

COCHRANE

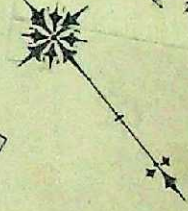
84

DUKE OF YORK

DUCKWORTH

FIRE LIMIT

FIRE LIMIT



SEE SHEET No 16

SOUTH

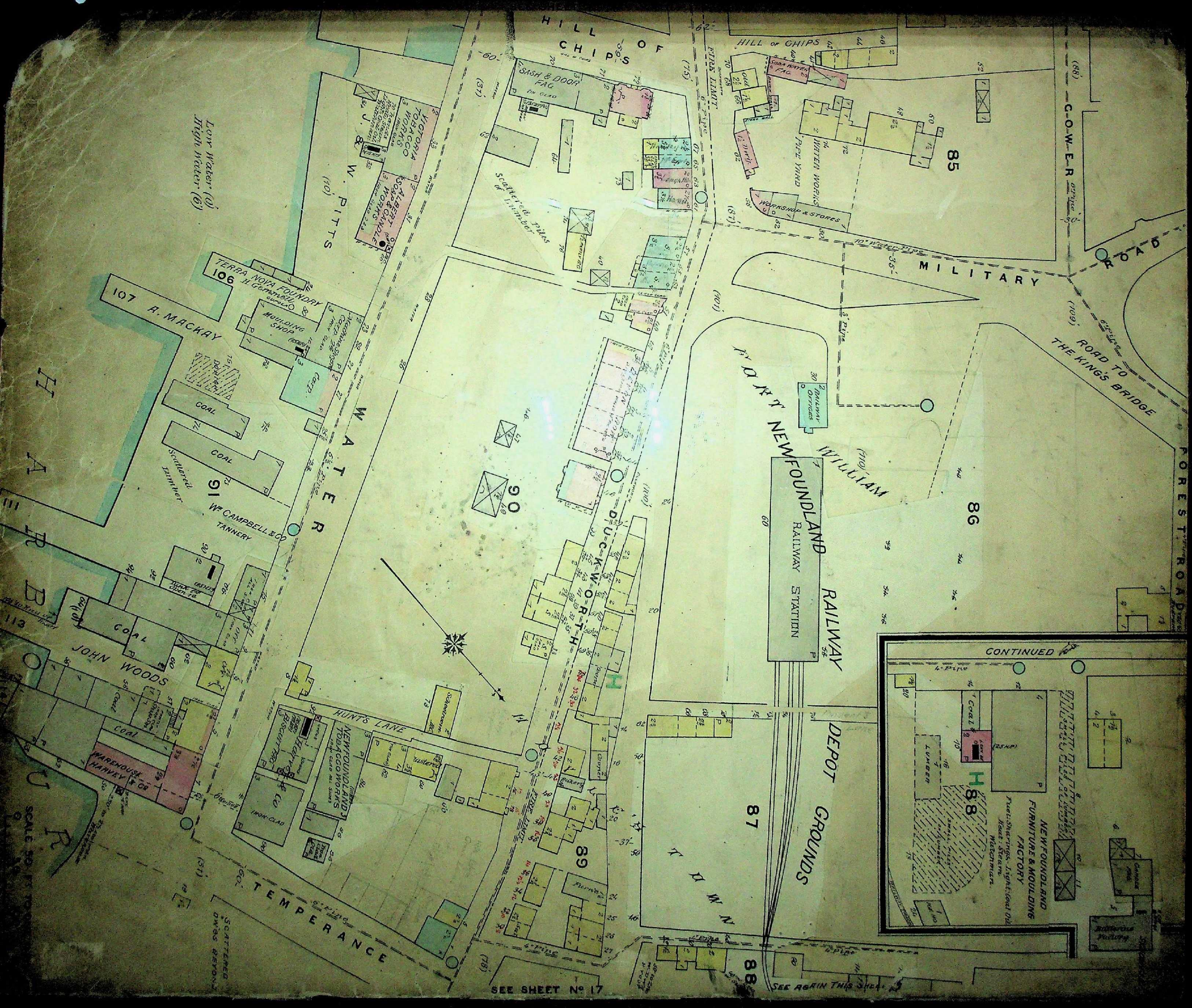
SEE SHEET No 17

HARRISON

High Water = 0  
Low Water = 0

SCALE 30

ST JOHN'S



HILL OF CHIPS

HILL OF CHIPS

COW-ER ROAD

MILITARY ROAD

ROAD TO THE KING'S BRIDGE

FOREST ROAD

NEW FOUNDLAND RAILWAY STATION

DEPOT GROUNDS

NEW FOUNDLAND FURNITURE & MOULDING FACTORY

W. PITTS

VICTORIA TOBACCO WORKS  
ALBERT SOAP & CANDLE WORKS

SASH & DOOR FACTORY

WATER WORKS  
WORKSHOP & STORES

Low Water (C)  
High Water (B)

TERRA NOVA FOUNDRY

A. MACKAY

COAL

W. CAMPBELL & CO TANNERY

JOHN WOODS

HUNT'S LANE

NEW FOUNDLAND TOBACCO WORKS

WAREHOUSE HARVEY & CO

TEMPERANCE

90

DUC-K-WORTH

87

89

H 88

88

SEE SHEET No 17

SEE AGAIN THIS SHEET

H  
A  
R  
B  
O  
R

U  
R

SCALE 50 FT

SCATTERED DWGS BEYOND



SCALE 50 FT TO ONE INCH  
0 50 100 150

LE MARCHANT ROAD

CONTINUED BELOW

LE MARCHANT ROAD

92A

BONCLODDY

92B

PENNYWELL ROAD

95

97

WILLIAMS

96

99A

COODVIEW

99B

98

CARTERS HI

93

FRESHWATER ROAD  
SPENCER

94A

94B

PARADE

SEE SHEET No 14

100

CONTINUED ABOVE

95

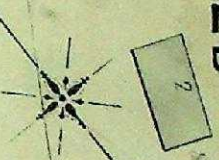
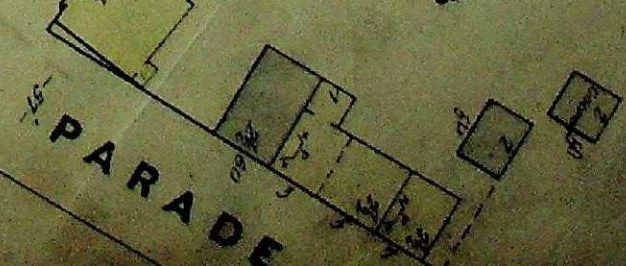
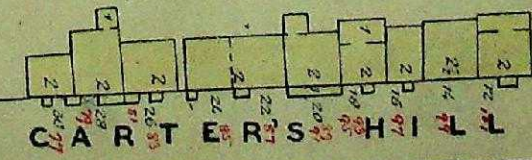
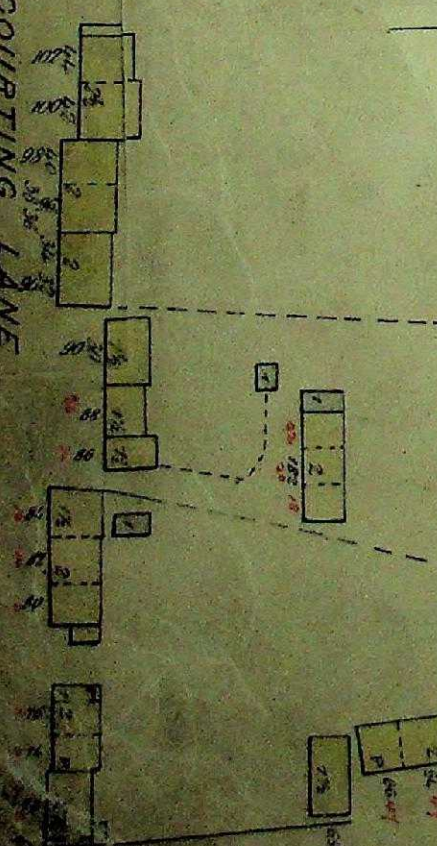
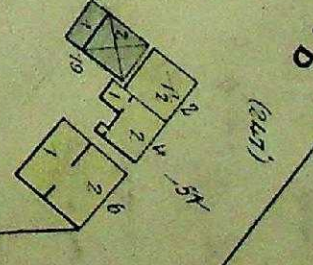
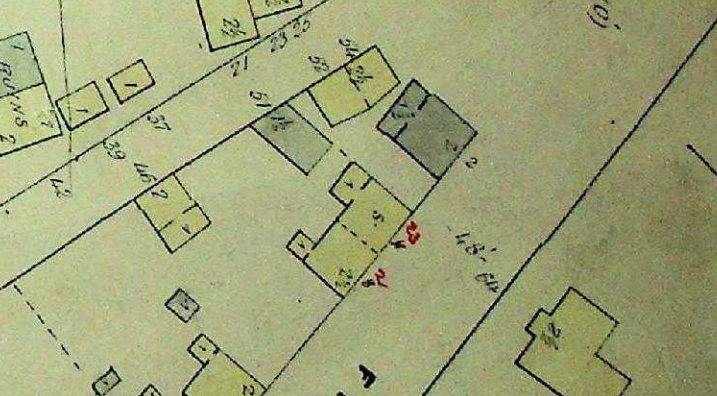
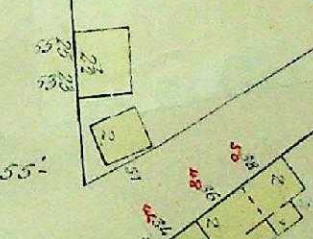
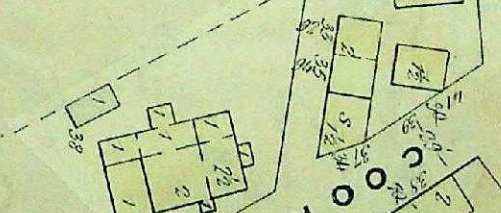
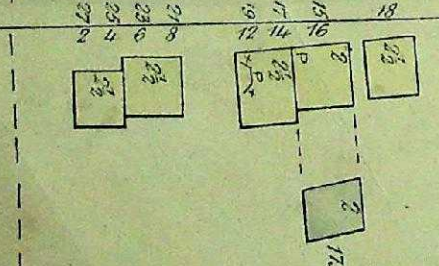
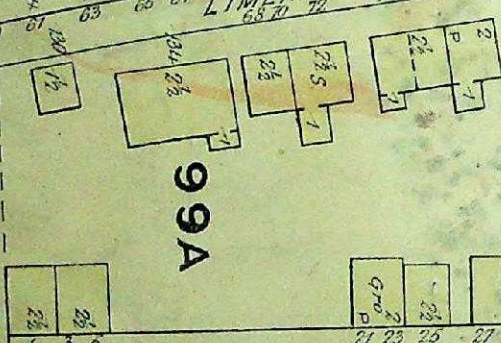
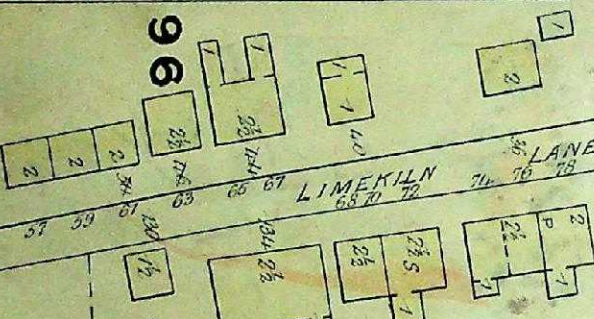
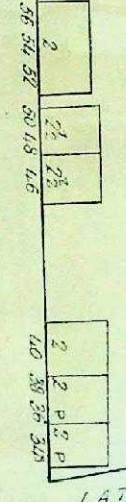
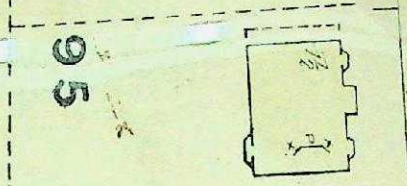
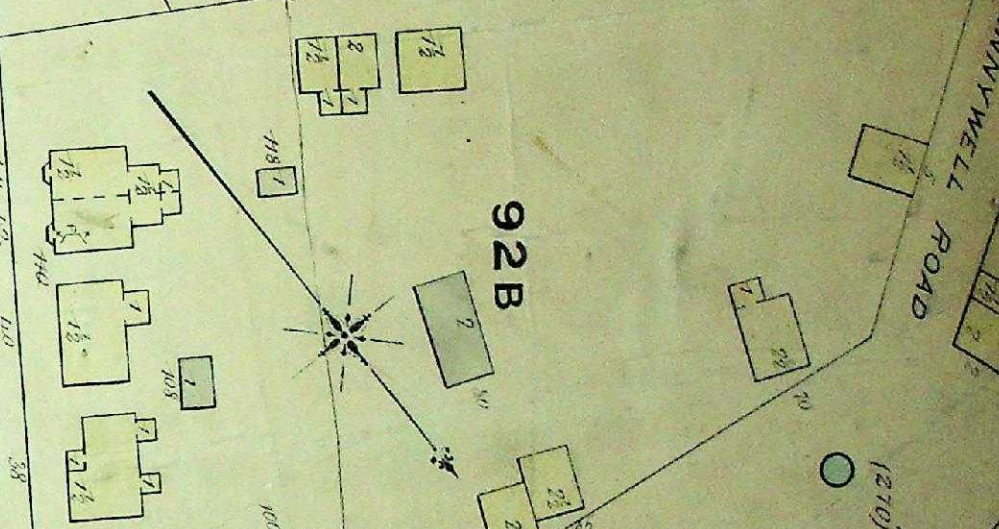
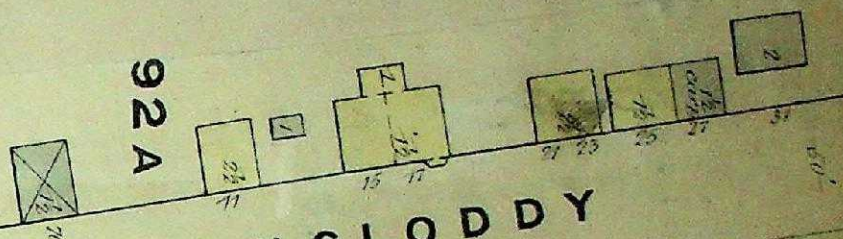
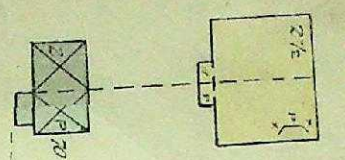
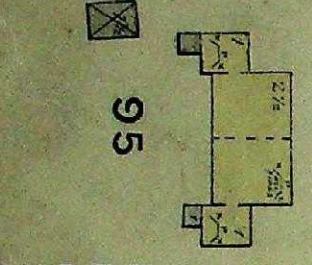
COURTING LANE

LANE  
WILLIAMS

LANE  
WILLIAMS

LANE  
LIMEKILN

LANE  
CARTERS





SCALE 50 FT TO ONE INCH  
0 50 100 150

SEE SHEET N° B

SEE SHEET N° D

SEE SHEET N° 15

SEE SHEET N° 56B

CARTER'S SEE SHEET N° 13

ALLEN'S SQUARE

GOWER

QUEEN'S ROAD

CATHEDRAL HILL

108

107

WESLEYAN CHURCH

106

105

104

GARRISON HILL

101

ACADEMY SCHOOL

WESLEYAN COLLEGE

101

WESLEYAN SCHOOL

WESLEYAN SCHOOL

100B

MILITARY ROAD

ROAD TO ALLANDALE

109

102

101

100B

YOUNG

100A

102

MARY TOWN

Police Meetings

ST. JOHN'S

SCALE 50 FT TO ONE INCH  
0 50 100 150

SEE SHEET No 9

SEE SHEET No 10





SEE SHEET NO 15

PRESCOTT

MONKSTOWN ROAD

BRITISH

123

QUEEN'S ROAD

128

129

124

126

127

MILL ROAD

125

130

KINGS ROAD

MILITARY ROAD

KNIGHT

132

CAREW

COVER

133

St. John's Skating Rink

Presbyterian School

SOUTH WEST

WEST

135

SOUTH WEST

131

COLONIAL BUILDING

HOUSE OF ASSEMBLY  
COUNCIL CHAMBER

SOUTH

WEST

134

NORTH

BANNERMAN ROAD

SEE SHEET NO 17

SEE SHEET No 16

BANNERMAN ROAD

SOUTH

NORTH

STUART AVE.

138

137

EAST

136

COCHRANE

GOVERNMENT HOUSE

MALL

139

MILITARY ROAD

145

TEMPERANCE

SEE SHEET No 12

144

ROAD TO SIGNAL HILL

142

SEE SHEET No 12

COWER

SCALE 50 FT TO ONE INCH

SEE SHEET No 12

No

No

12

140

ENGLISH CHURCH

ST THOMAS KILNICK

ST THOMAS SCHOOL

143

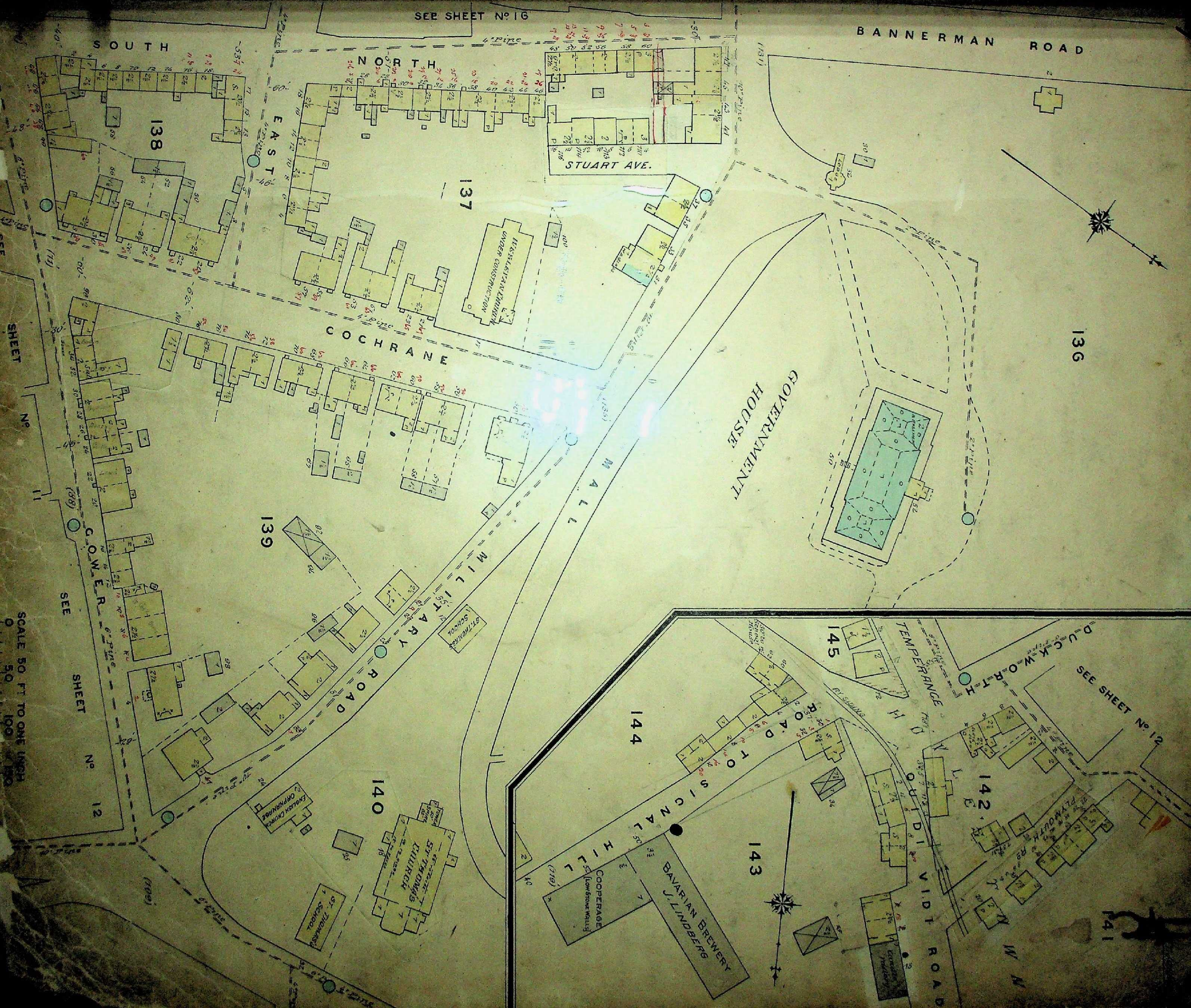
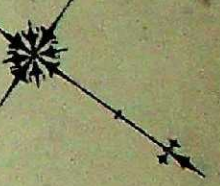
BAVARIAN BREWERY J. LINDBERG

COOPERAGE (Low Stone Walls)

VIDI ROAD

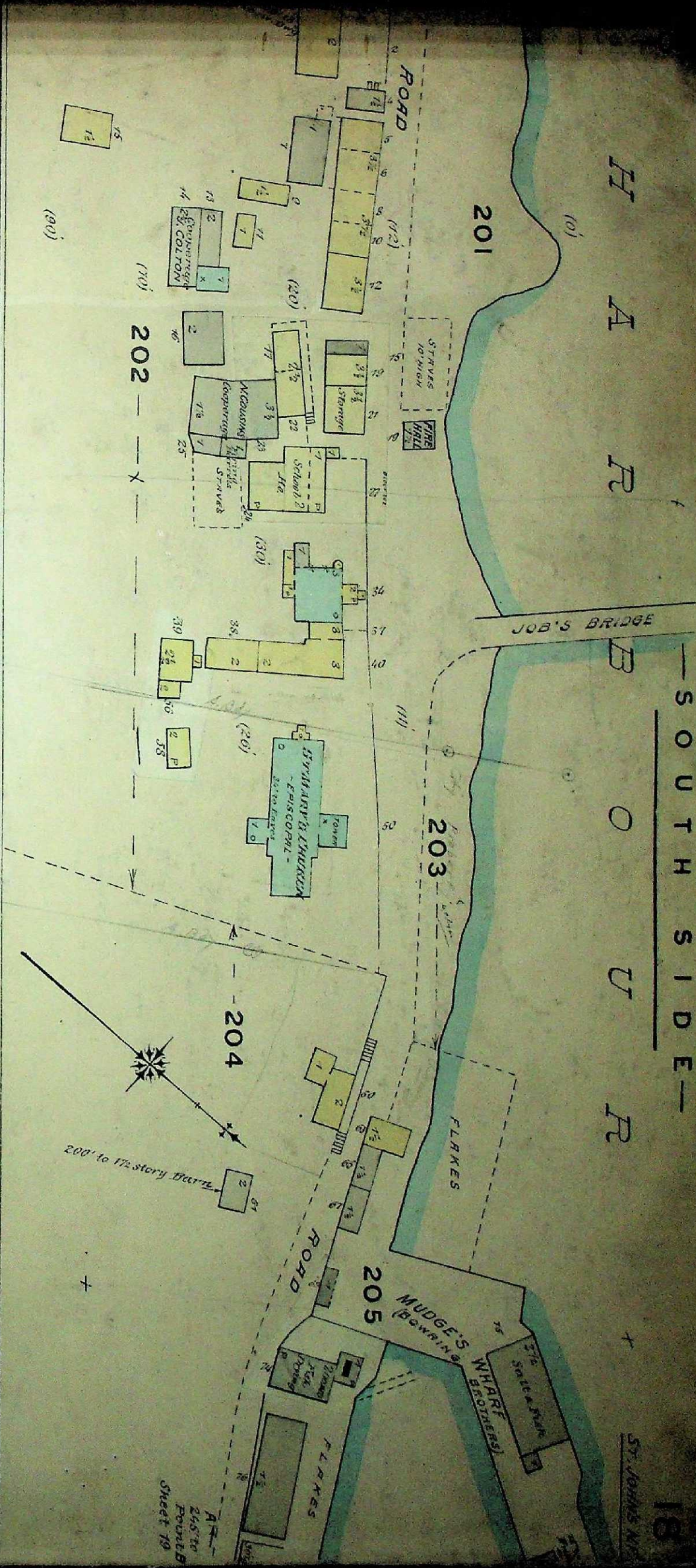
141

W N

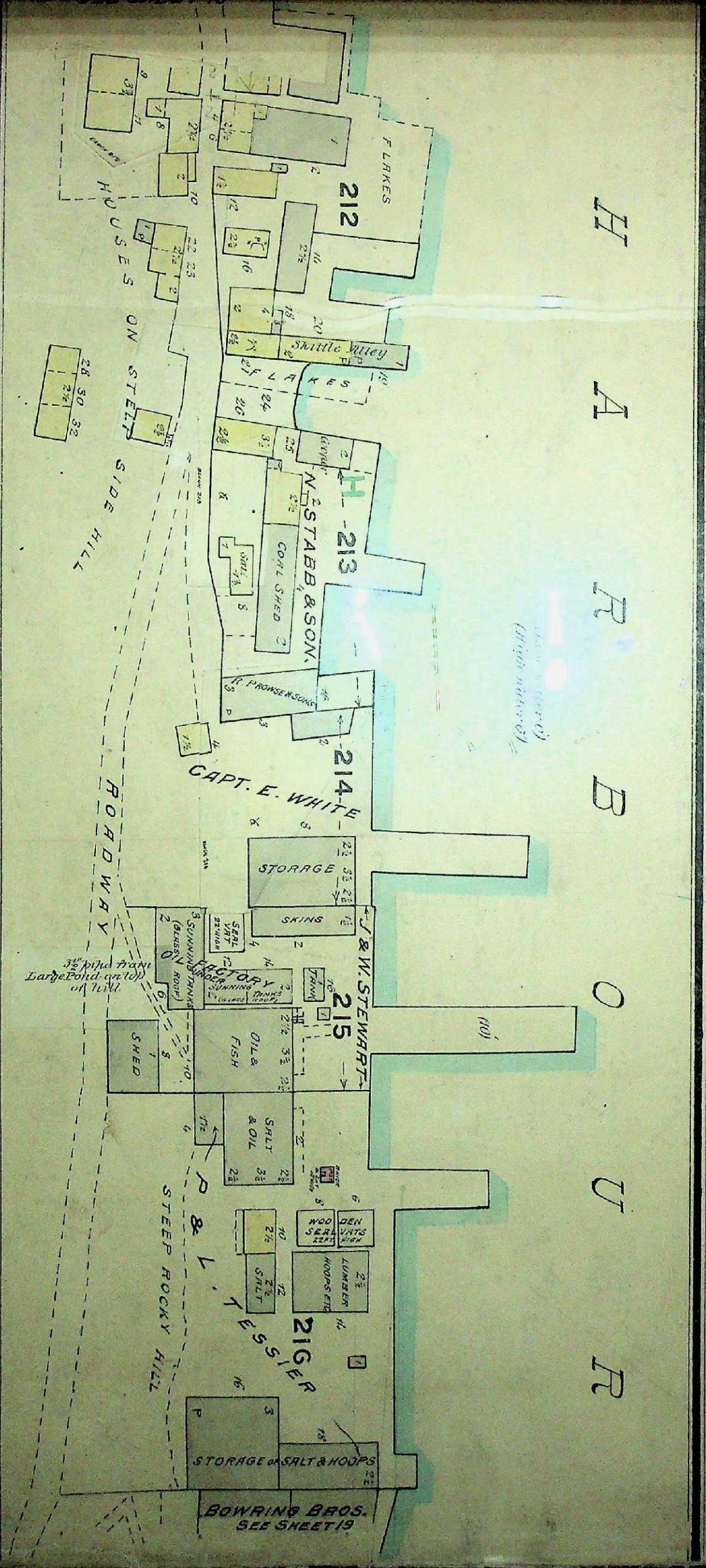


H A R B O R

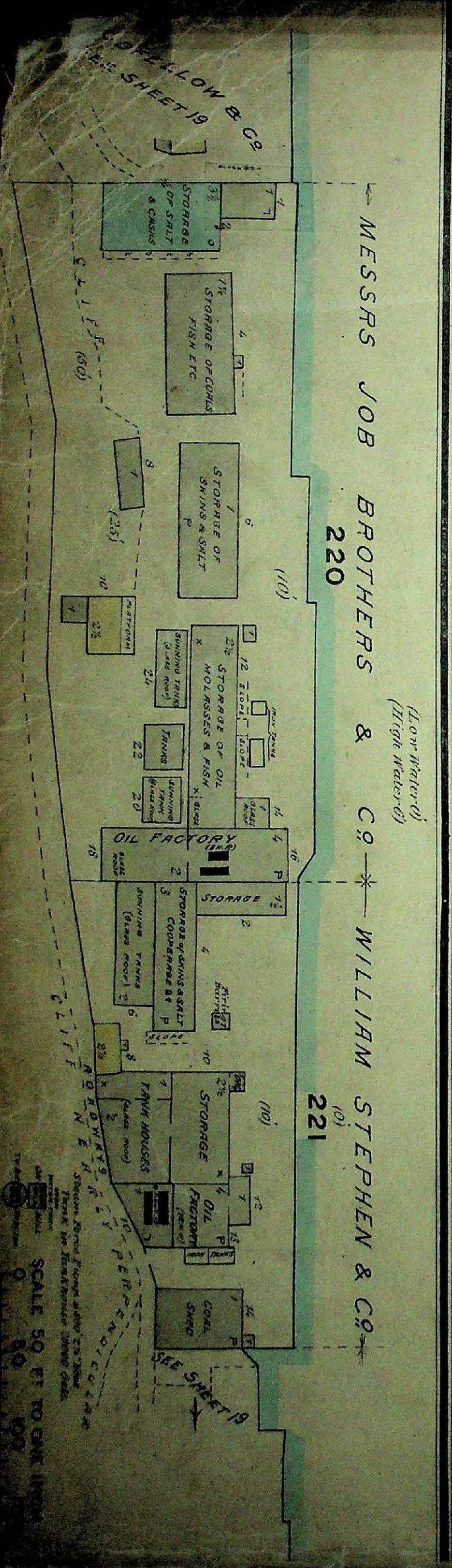
SOUTH SIDE



H A R B O R



MESSRS JOB BROTHERS & CO. 220  
WILLIAM STEPHEN & CO. 221



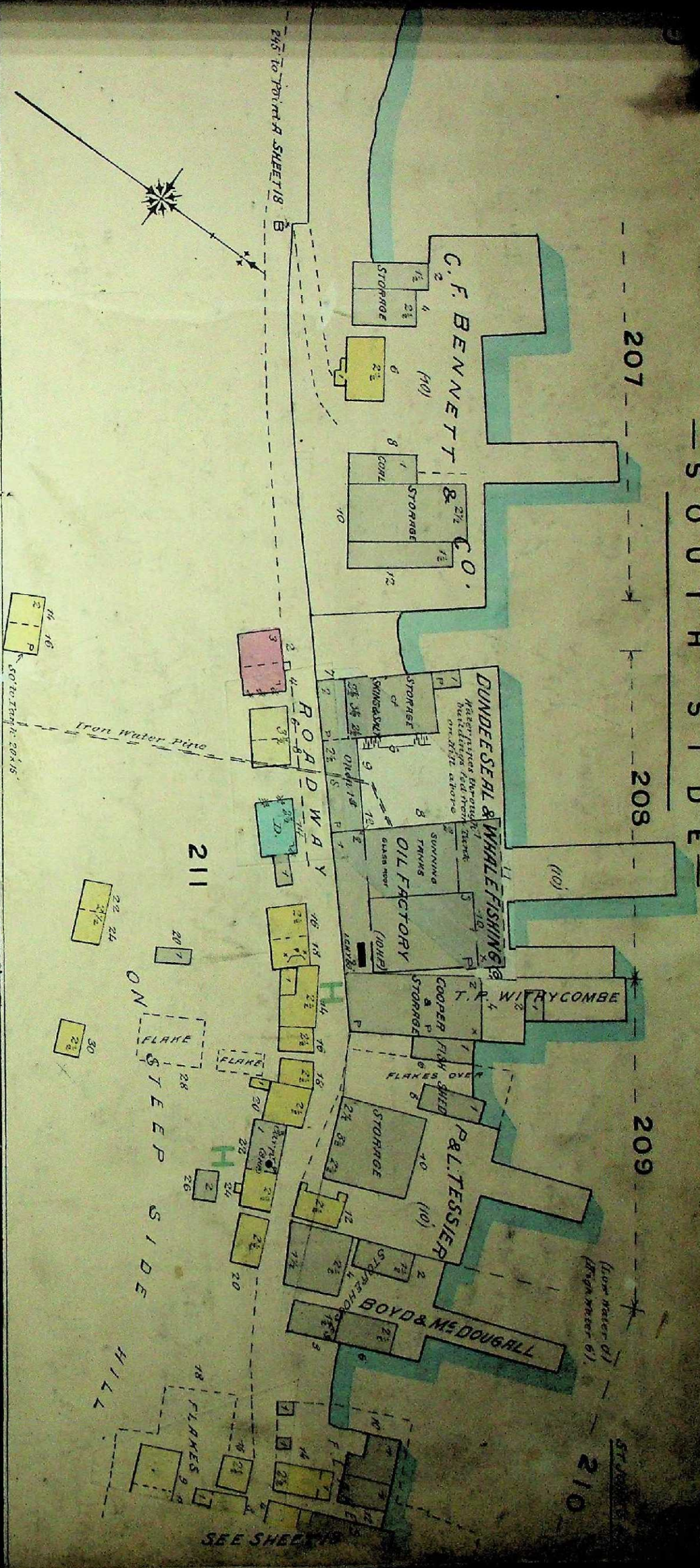
SCALE 50 FT TO ONE INCH  
 0 50 100  
 SEE SHEET 19  
 ST. JOHN'S N.T.

207

208

209

210

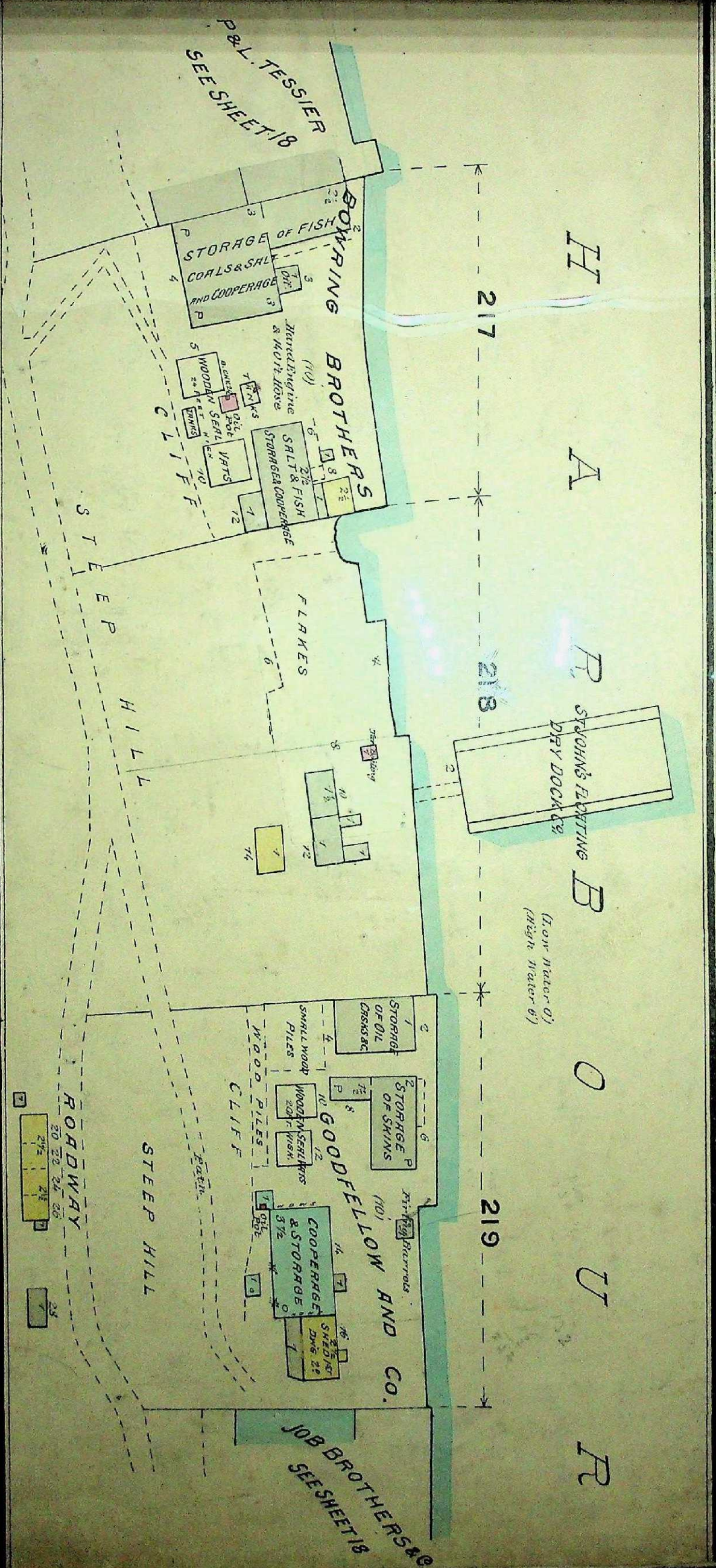


H A R B O U R

217

218

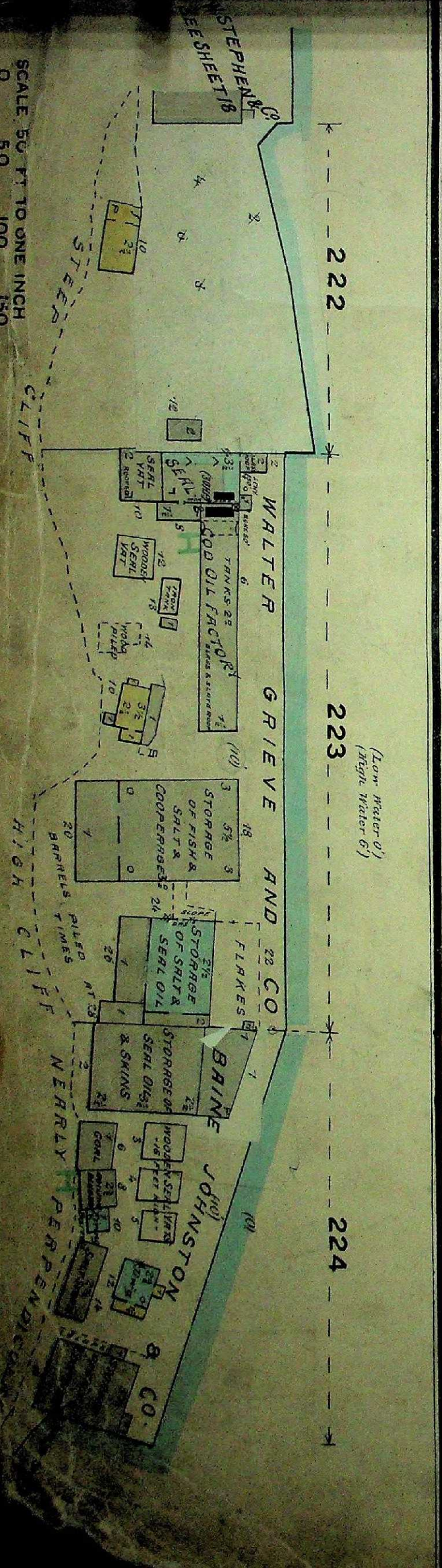
219



222

223

224



SCALE 50 FT TO ONE INCH  
0 50 100 150

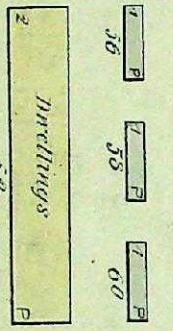
SCALE 50 FT TO ONE INCH  
0 50 100 150

Mondays Pond

Road to St Johns



250



**COLONIAL CORDAGE CO.**

100 Hurdles, 1 Hoop, 1 Steam  
Light, Electric, 2 Water  
System, Fire Pump, windmill

Tar store 21

Old store 25

Spinning Room

Warring house

Finishing Room

Coal shed

Washing up

Engine room

Tow room

Store

Coal store

> Rope > Walk >

No Exposures

LE MARCHANT R<sup>d</sup> (LATE PATRICK)

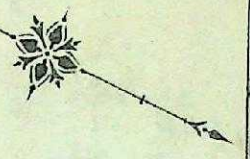
L A Z Y

R O A D

10

150

Continued above



16

BANK ROAD

SEE SHEET N<sup>o</sup> 5

SPRINGDALE

18

FLOWER

JOHN STREET

HILL

17

17A

STREET

180

SPINNING 20

ENGINE  
SHADE  
WATER ST

H A R B O U R

SEE SHEET

Office  
WORK  
SHOPS

190

JOB'S BRIDGE

GRAVING DOCK

WAREHOUSE

H A R B O U R

SEE SHEET 18

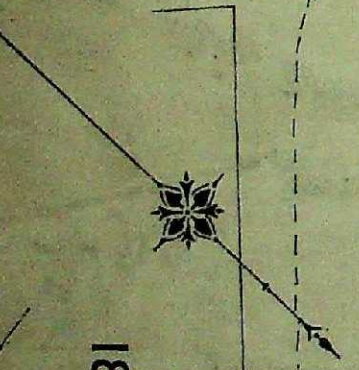
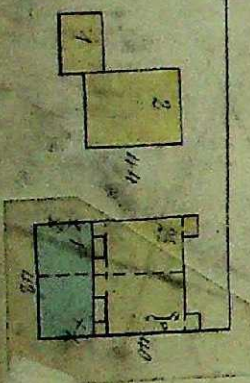
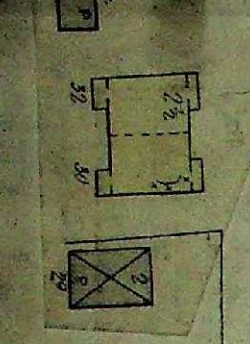
SEE BELOW

188

SEE SHEET 18

H A R B O U R

188



ST. JOHN'S



113A

JAMES

BARNES ROAD

No Exposures

SEE SHEET No 2

112A

WILLIAM ROAD

ROAD

SEE SHEET No 2

167

OIL FACTORY

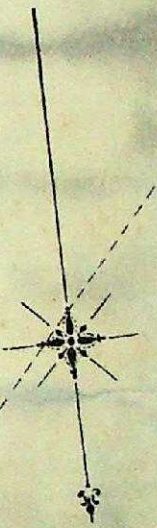
SEE SHEET No 16

SEE SHEET No 2

129

MONKSTOWN ROAD

HAYWARD AV



166

RENNIE'S MILL ROAD

SEE SHEET No 2

111

MAXSE

159

FLEMING

No Exposures

165

SCALE 50 FT = 1 INCH



163

MONKSTOWN ROAD

164

ST. JOHN'S